

ST200P SNMP CARD



PRODUCT INTRODUCTION

The ST200P card provides a monitoring and management of Powersan UPS which is able to check real time network dynamic data, manage remote control and network management. It can monitor a stand-alone Powersan UPS, and achieve centralized monitoring with relative PC software. If there is any faults take place on the UPS, the monitor will sent alarm message to the appointed remote monitoring computer.

FEATURES



MONITORING AND CONTROL FUNCTIONS BY BROWSER



SEND THE DAILY REPORT BY EMAIL



MONITORING REAL-TIME STATUS OF UPS



SUPPORT PROTOCOLS SUCH AS TCP/IP, FTP, NTP, HTTP, SMTP, SNMP v1/v3 AND MODBUS



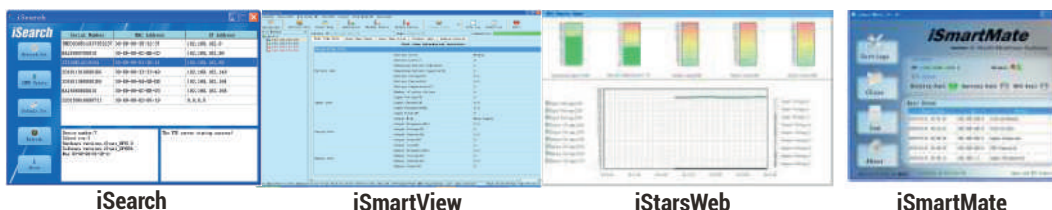
SUPPORTS GPRS SMS MODULE OR HUMIDITY/TEMP. SENSOR (OPTIONAL)



SEND RELATED INFORMATION BY EMAIL (ALERTS & FAULT)

TECHNICAL DATA

- ✓ The ST200P card includes very simple installation program; iSearch, iSmartView, iSmartMate software.
- ✓ The iSearch software search the IP address al ST200P card, then according to the IP address, you can lag into iStars page in the web browser far further settings.
- ✓ The iSmartView software is a centralized monitoring software of many sets of Powersan UPS. iSmarView supports multi-user privilege control, device management, real-time monitoring, static map display, remote control, data logging, other simple interactive features, and alarms between remote and local areas.
- ✓ The iSmartMate software protects the user data security, sending a shutdown, sleep standby command to the server when a failure happens to the Powersan UPS. The shutdown event can be automatically setup and saved in order to save the importan document of the computer.



iSearch

iSmartView

iStarsWeb

iSmartMate

TECHNICAL DATA

MODEL	ST200P
Communication Interface	RJ45, RS232
Network Interface	10/100Mbps High-speed Ethernet adaptive
External GSM connected	Support
SNMP MIB	RFC1628
Network protocol	TCP/IP, UDP, SNMP, SNTP, HTTP, SMTP, DHCP, DNS, FTP, ARP, ICMP, etc.
LED Indicator	Power, Status, Fault, LAN 10/100M Link/ Active
Input power (DC)	9 - 24 VDC
Power consumption	Max. 1.5 W
Operating Environment	Temp. 0 - 50°C / Humidity: 10 - 90%
Other device	Real-time system clock
Hardware upgrade	FTP remote network upgrade
Language	English
System Security	Offers IP-based filtering mechanism, and User ID password protection for system operation and control management



*All specifications are subject to change without notice.

APPLICATION DIAGRAM

